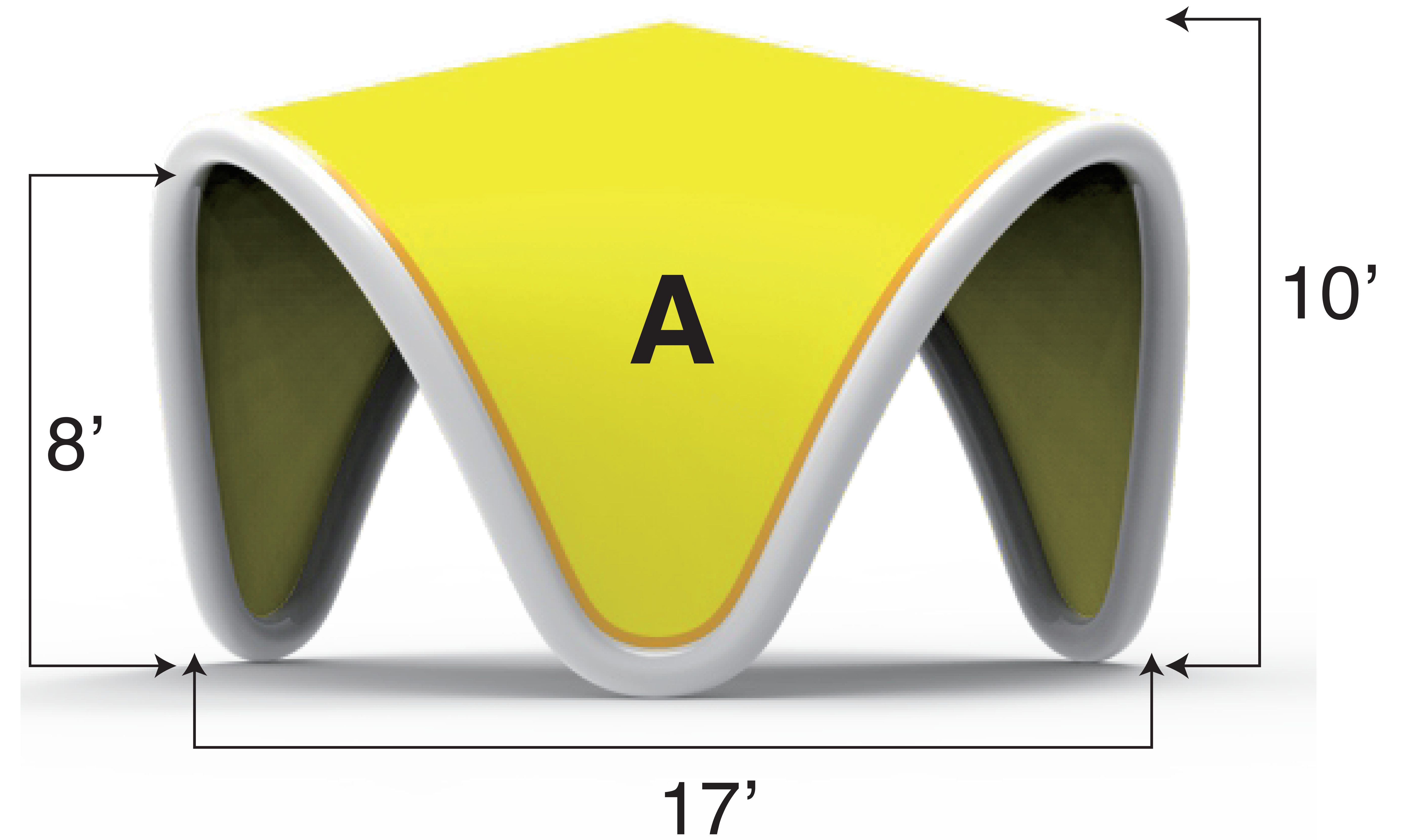
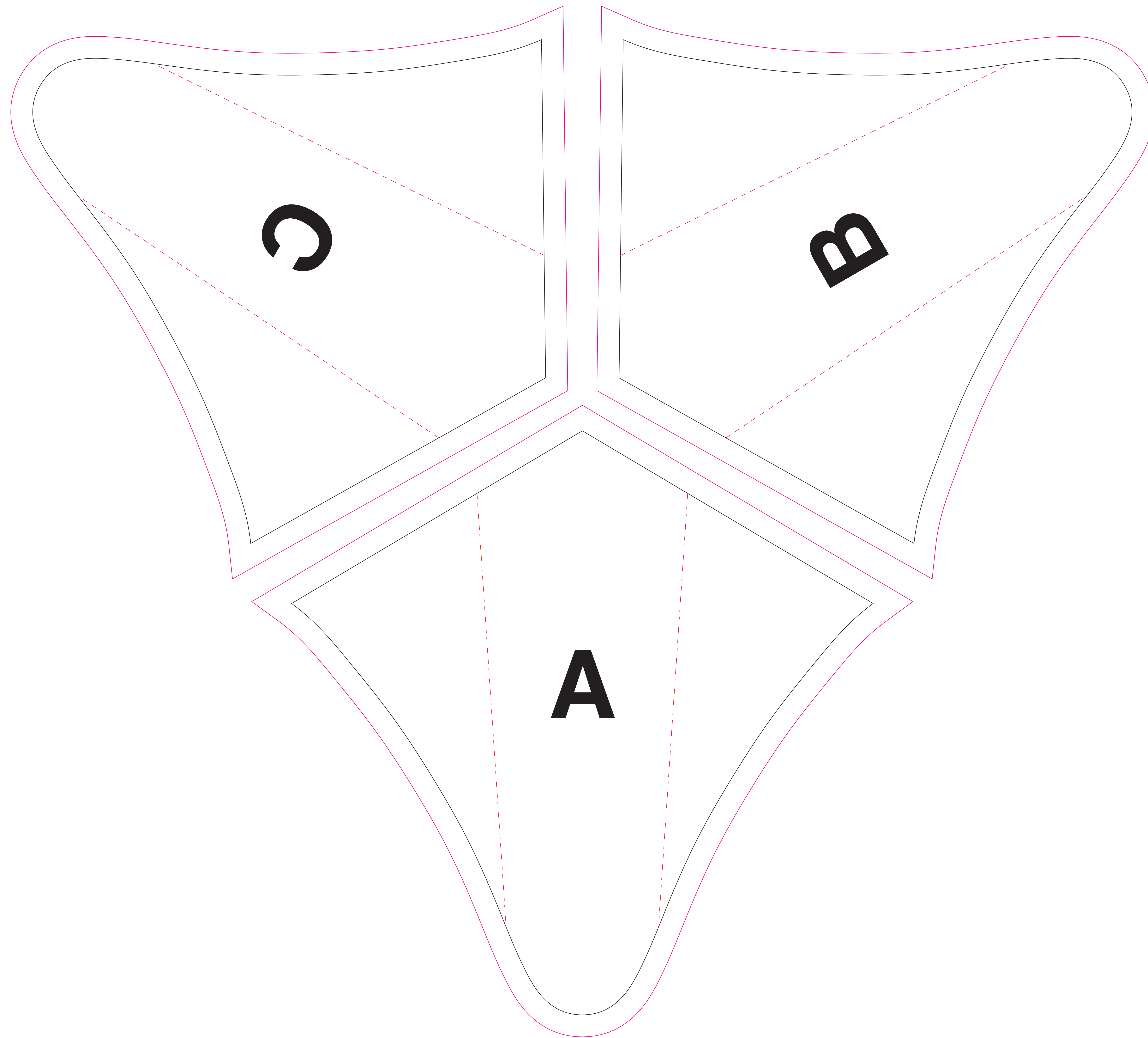


SCALE 1/10
OF ACTUAL SIZE

Airwave Inflatable

17' x 17'



Adobe Illustrator (Mac or PC) - convert your fonts to outlines and save as native Illustrator format (.ai). Artwork should be in only vector format. Artwork should be in CMYK. [!!Preferred!!](#)

• Vector: Adobe ILLUSTRATOR CS6 or earlier versions: .AI, .EPS, or print ready .PDF files.

Adobe Photoshop (Mac or PC) - rasterize your fonts and save files as .psd (if you have layers) (or need transparency). Will also accept Photoshop EPS formats. Image resolution should be 150 dpi at 100% size the artwork is to be printed at. (or 300 dpi and 1/2 the actual size to be printed)

• Raster: Adobe PHOTOSHOP CS6 or earlier versions: .PSD, .TIFF, High res. .JPG or print ready .PDF files.

• All fonts need to be outlines in order to avoid any defaulted text

• Digital imaging will be output in CMYK process
• Use ZIP compression for multiple files

□ Trim Line
Most of your artwork should be within this area

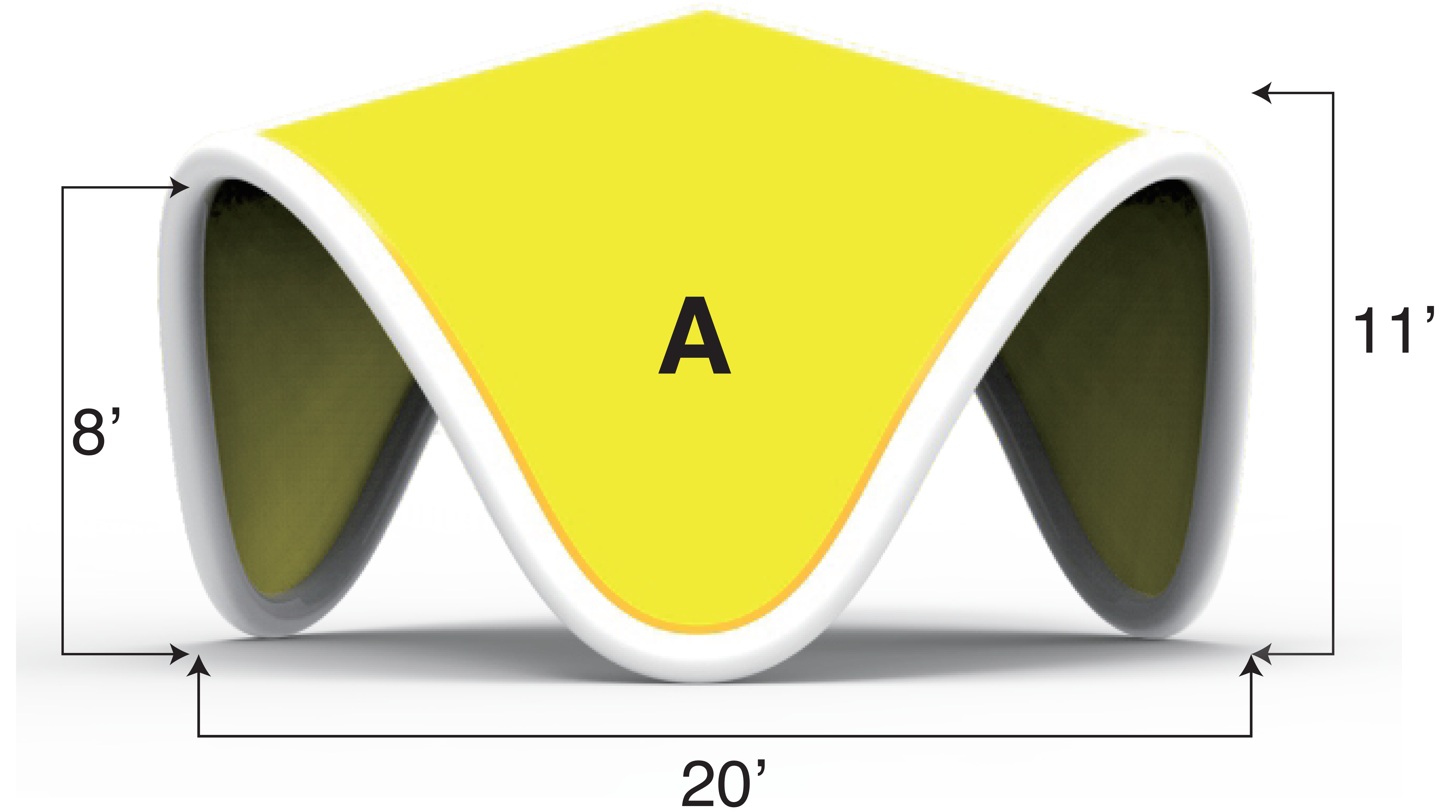
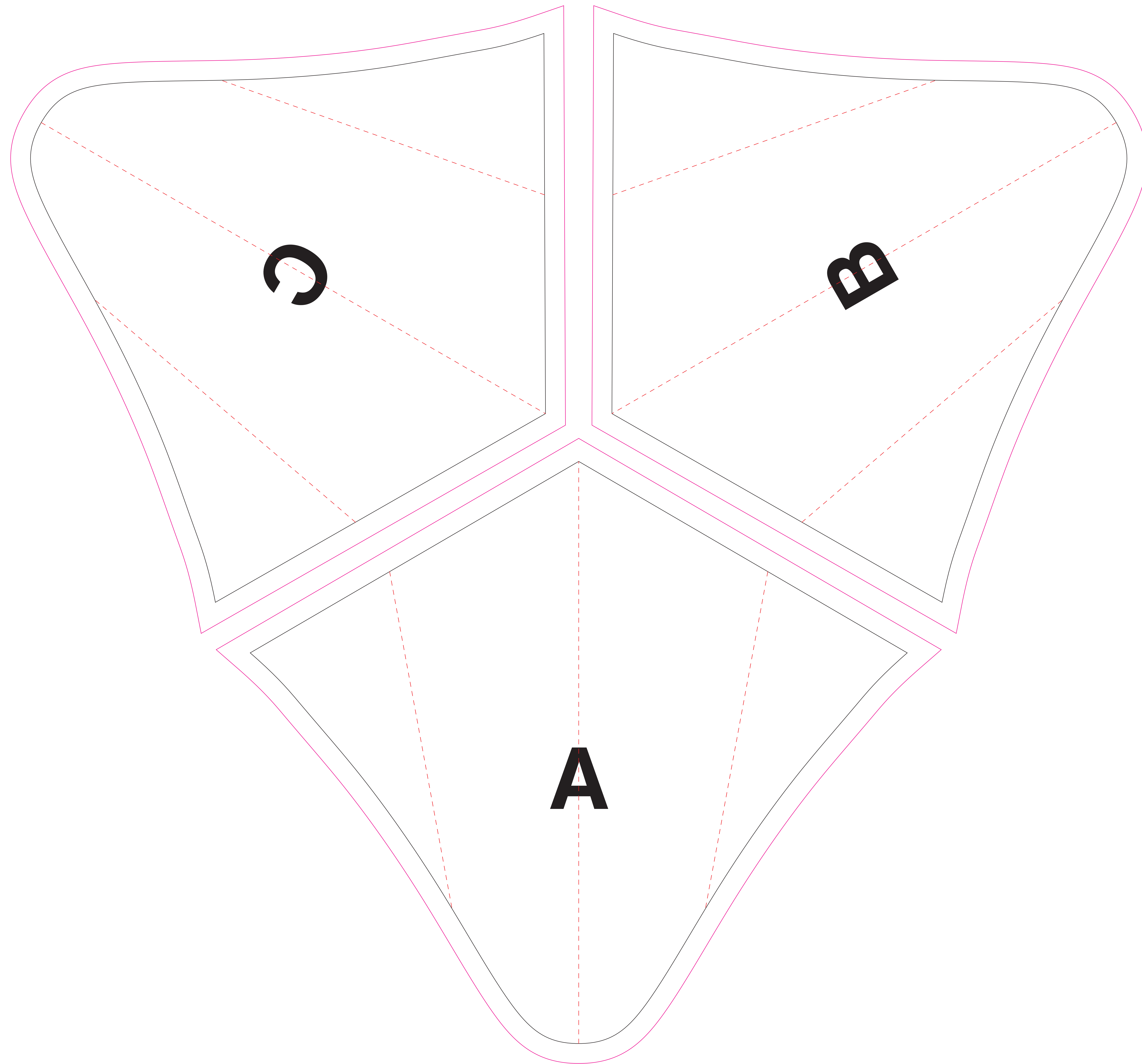
□ Bleed
Area will not print

□ Sewing Line

SCALE 1/10
OF ACTUAL SIZE

Airwave Inflatable

20' x 20'



Adobe Illustrator (Mac or PC) - convert your fonts to outlines and save as native Illustrator format (.ai). Artwork should be in only vector format. Artwork should be in CMYK. [!!Preferred!!](#)

• Vector: Adobe ILLUSTRATOR CS6 or earlier versions: .AI, .EPS, or print ready .PDF files.

Adobe Photoshop (Mac or PC) - rasterize your fonts and save files as .psd (if you have layers) (or need transparency). Will also accept Photoshop EPS formats. Image resolution should be 150 dpi at 100% size the artwork is to be printed at. (or 300 dpi and 1/2 the actual size to be printed)

• Raster: Adobe PHOTOSHOP CS6 or earlier versions: .PSD, .TIFF, High res. .JPG or print ready .PDF files.

• All fonts need to be outlines in order to avoid any defaulted text

• Digital imaging will be output in CMYK process
• Use ZIP compression for multiple files

Trim Line

Most of your artwork should be within this area

Bleed

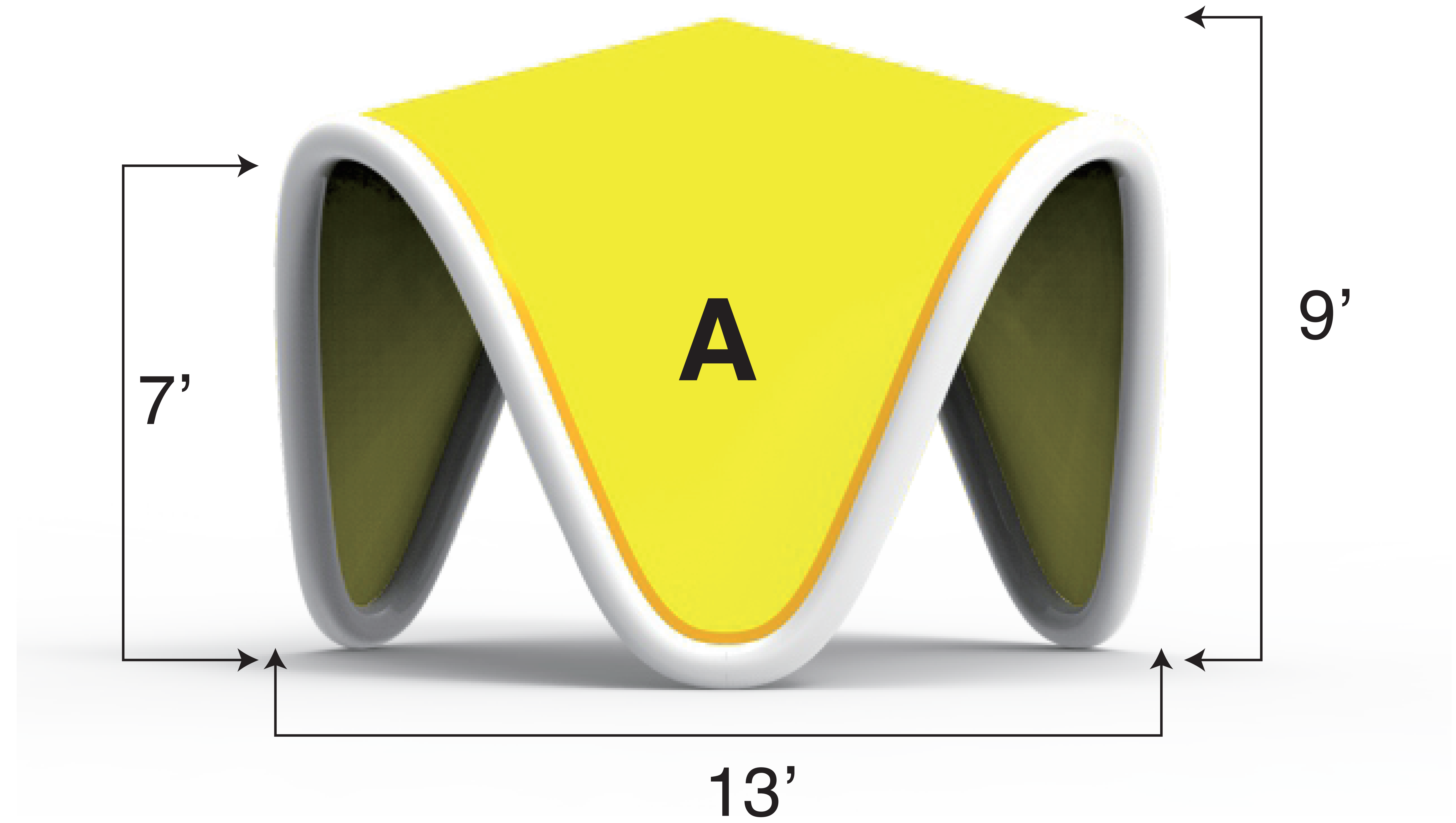
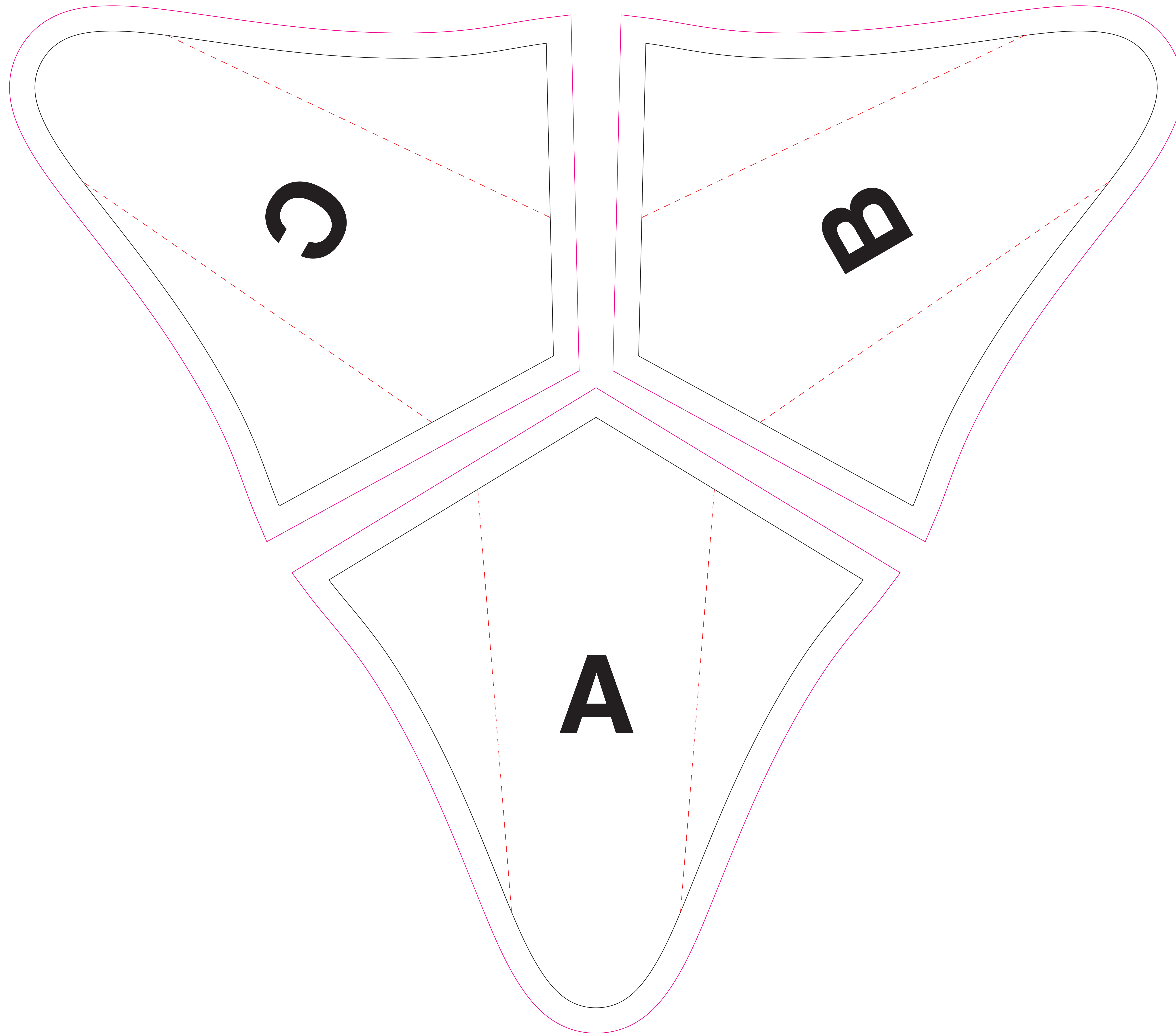
Area will not print

Sewing Line

SCALE 1/10
OF ACTUAL SIZE

Airwave Inflatable

13' x 13'



Adobe Illustrator (Mac or PC) - convert your fonts to outlines and save as native Illustrator format (.ai). Artwork should be in only vector format. Artwork should be in CMYK. **!!Preferred!!**

• Vector: Adobe ILLUSTRATOR CS6 or earlier versions: .AI, .EPS, or print ready .PDF files.

Adobe Photoshop (Mac or PC) - rasterize your fonts and save files as .psd (if you have layers) (or need transparency). Will also accept Photoshop EPS formats. Image resolution should be 150 dpi at 100% size the artwork is to be printed at. (or 300 dpi and 1/2 the actual size to be printed)

• Raster: Adobe PHOTOSHOP CS6 or earlier versions: .PSD, .TIFF, High res. .JPG or print ready .PDF files.

• All fonts need to be outlines in order to avoid any defaulted text

• Digital imaging will be output in CMYK process

• Use ZIP compression for multiple files

□ Trim Line

□ Bleed

□ Sewing Line

Most of your artwork should be within this area

Area will not print