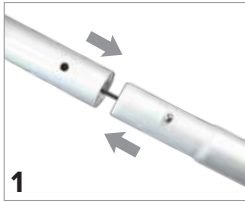
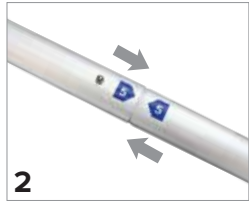


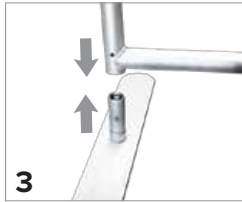
# General Set Up Instructions *\*Set up one frame at a time to avoid mixing pieces*



1  
Straighten and connect all bungeed poles.



2  
Organize all remaining poles by their numerical order & connect accordingly. **Insert any remaining reinforcement poles.**



3  
Lift the frame and connect the footplates onto the frame.

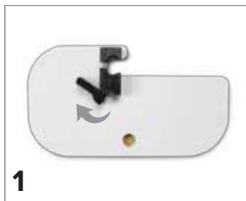


4  
Put on your fabric gloves and slide the printed graphic over the frame.



5  
Zip up to close the cover.

## Side Shelf



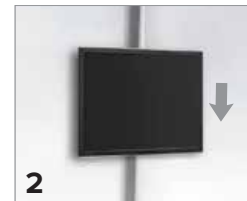
1  
Start by loosening the latch on the bottom side of the shelf.



2  
Connect shelf poles to the footplate. Then insert the shelf top into the pole and close the latch.



1  
Snap the TV Mount into place between the tension walls/banners. Then, slide the X piece out.

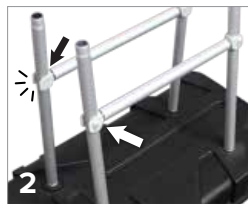


2  
Screw X piece onto the back of your TV. Then secure the TV into the mount by sliding it into place until it clicks.

## Case-2-Counter



1  
Insert all four poles into the bottom case lid.



2  
Connect the crossbars to the four poles by snapping them together.



3  
Then, insert the top case into the four poles.



4  
Pull the printed graphic over the frame. Then, buckle the two straps on the top & bottom.



5  
Place top lid to cover the storage area and you're all set.

## Light



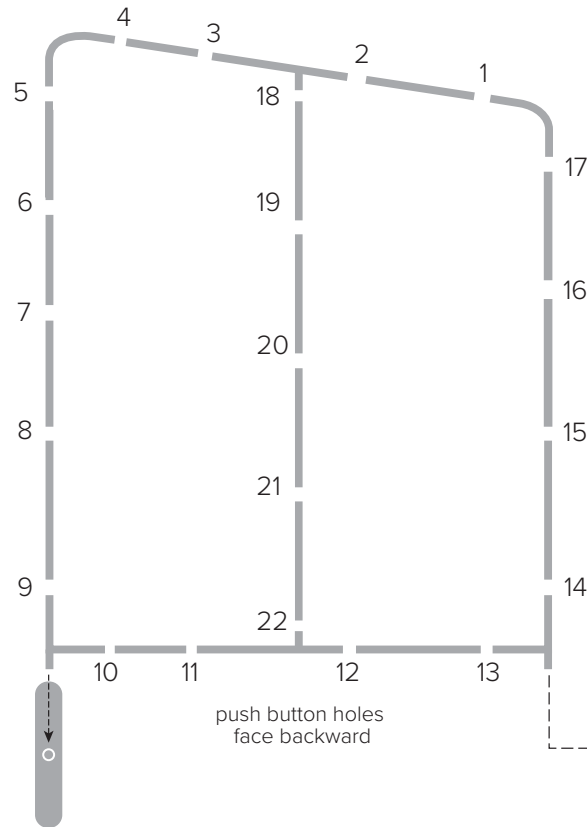
1  
Attach metal clamp on top of wall/banner and tighten. Then, slide light onto clamp.



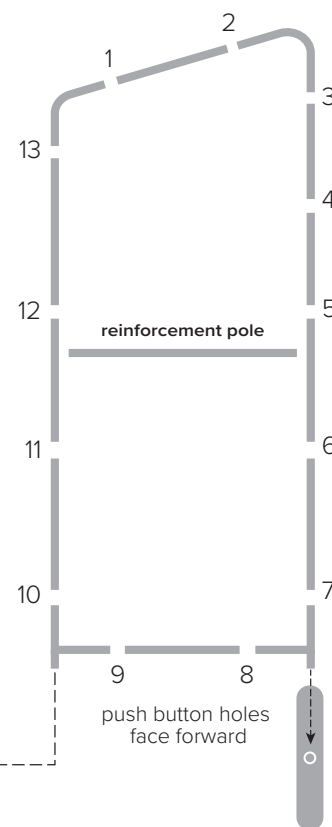
2  
Ensure the light is switched off before attaching cord and plugging into outlet.

# Quick-N-Fit Booth 1104

## Wall



## Banner



Side Shelf

### Includes:

- 1 Wall
- 1 Banner
- 1 Case-2-Counter
- 1 Side Shelf
- 1 TV Mount
- 1 Light

*\*TV & Flooring Not Included*

